

# Returning to School

Monk Fryston CE Primary School



# Coming back to school

- We are delighted to welcome children back to school. However, we hope you can appreciate and understand that things will be different. This is to keep everybody safe. Our number one priority remains the safety of our children and staff.
- There will be changes to the school day. Please help us to keep to these for everyone's safety.
- Please talk to your child about the changes explained in the following pages so that they are prepared for coming back to school.
- We have completed several risk assessments following government guidelines prior to writing our reopening plan. Steps have been taken to reduce the risks to children and adults as much as we are able.
- We will not always be able to maintain social distancing of 2m within classrooms and so, children will be placed in a 'social bubble'. This will mean that they are in the same group every day and will stay in the same classroom with the same adult. This may not be their usual room or teacher.
- Groups will not mix. Playtimes and lunchtimes will happen separately. This will mean that timings during the day will be different.



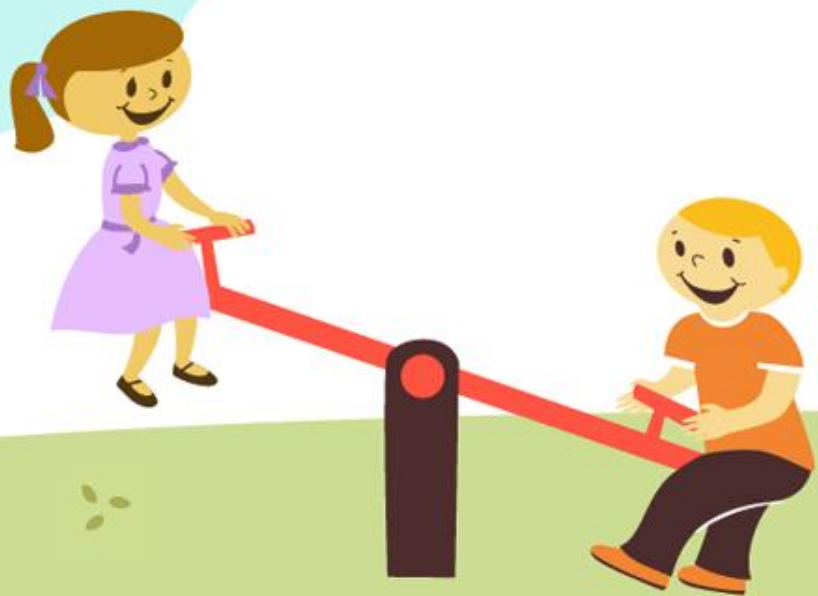
# Who can return

- Children in Reception Class will return on 2<sup>nd</sup> June.
- Children in Year 1 will return on 15<sup>th</sup> June.
- Children in Year 6 will return on 22<sup>nd</sup> June.
- No other children will be allowed to return at this time. We will inform parents following the government guidelines when other year groups are allowed to return.
- School will close at 12pm every Wednesday for every year group to allow for additional cleaning.
- Children of Essential Workers can apply for a place in childcare which will continue to run.



# The start of the day

Staggered times



# Start of the day

- Children in Reception should arrive at 8:50am as usual
  - Children in Year 1 should arrive at 9:10am
  - Children in Year 6 should arrive at 9:30am
- 
- Please do not arrive before this time and do not wait around the school gates or playground

Class	Group 1	Group 2
Reception	8:50	8:50
Year 1	9:10	9:10
Year 6	9:30	9:30



# Upon arrival

Children should only be accompanied by 1 family member

Wait on the top playground 2m apart – do not go down the steps or slope

When called into school wash your hands straight away then go to your classroom

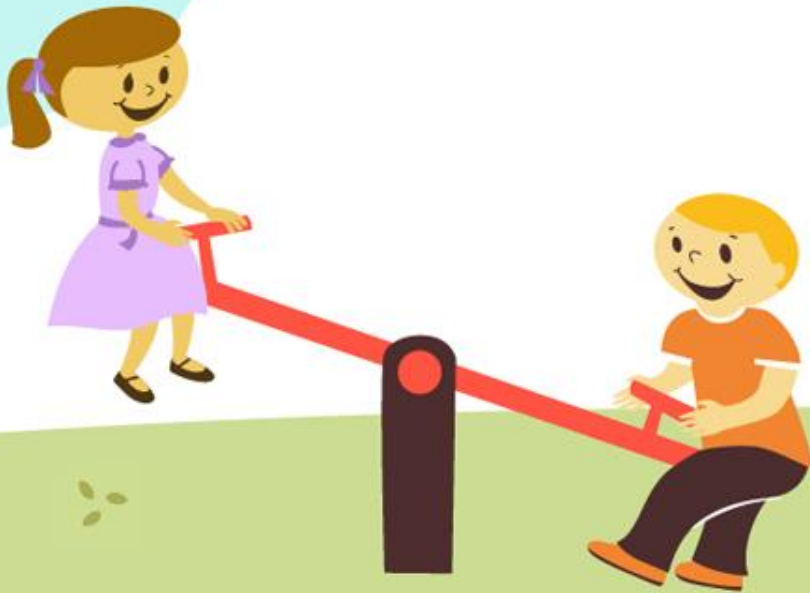
You will stay with the same group all day. Groups will not have the same playtimes or lunch

At the end of the day go straight home, do not wait for friends in the playground



# During the day

Changes to our routines



# During the day

- Children will stay in their social bubble group and groups will not mix.
- Lessons will be taught in the classroom allocated to the group and every effort will be made to keep groups apart when using toilets, between sessions, and on the playground.
- We will have some new rules about cleanliness and routines. Children will need to follow these rules, and our rewards and sanctions will be applied as usual.
- The kitchen will not be providing hot meals, but will prepare 'grab a bag' packed lunches for children who would like to purchase a lunch or have a free meal. These will be eaten in classrooms or on the field. Other children may bring a packed lunch.





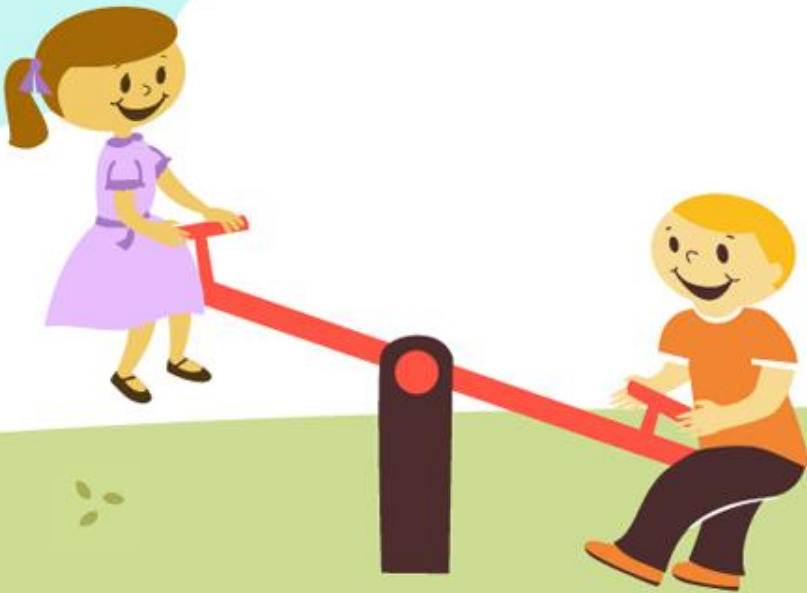
# Lessons

- Lessons will focus upon coming back to school, wellbeing and happiness, and socialisation within the group. We will also focus upon Maths and English to ensure children are ready for the next steps in their learning from September.
- The way that we teach reading will change a little. Books will need to be placed on a holding shelf for 72 hours before being brought back into circulation. We will therefore not have the level of book stock to enable your child to change their reading book with the normal frequency. We will try to listen to them read in class every day. We make sure that they can get a new book every Friday so that they are able to read at home over the weekend.
- Playtimes and lunchtimes will be staggered. Lunches may not be eaten in the hall, but may be in classrooms or a picnic on the field so that groups remain apart.



# Keeping safe

Following advice from the Government and Public Health England



# The importance of hygiene

- Children will be spaced apart but will not be expected to socially distance
- We will ensure that they wash their hands thoroughly throughout the day and use hand sanitiser
- We will encourage children to use tissues if they sneeze, following the 'Catch it, bin it, kill it' approach
- Sharing resources, bringing things from home, and touching things outside the social bubble will be restricted. Children will have their own pack of pens & pencils etc in their room.
- Staff and children will not wear face masks or PPE
- All children should have their own water bottle. We will limit the use of drinking fountains for safety reasons



# Transmission between home and school

- In order to minimise the risk of transmission of infection between home and school (and vice versa) we will reduce the things that children will need.
- They will not need PE kit as PE lessons will be done in uniform.
- School uniform will need to be washed more regularly than normal (daily is preferable).
- The school fruit scheme will not operate before September, and so children may bring in a healthy snack. They will be given a named cup if they usually have school milk.
- Please do not send children with their own hand sanitiser or moisturiser because these could be sources of contamination or be hazardous to others.
- Reading books will not be changed every day because our stock is limited. Children should bring a reading book home when they can.



# What you child should bring into school

- They will need their water bottle, which should be named and only for them.
  - They should still bring a packed lunch if they normally have one. These will be stored safely.
  - They may bring a breaktime snack in a named container.
  - Younger children should have a change of clothing which will remain on their peg in a sealed bag and will only be used if they need it.
  - They should have the right clothing for the weather – a coat and a sunhat (these can stay on their peg in the cloakroom).
- 
- Please do NOT bring in any toys, cars, cuddly toys etc from home.



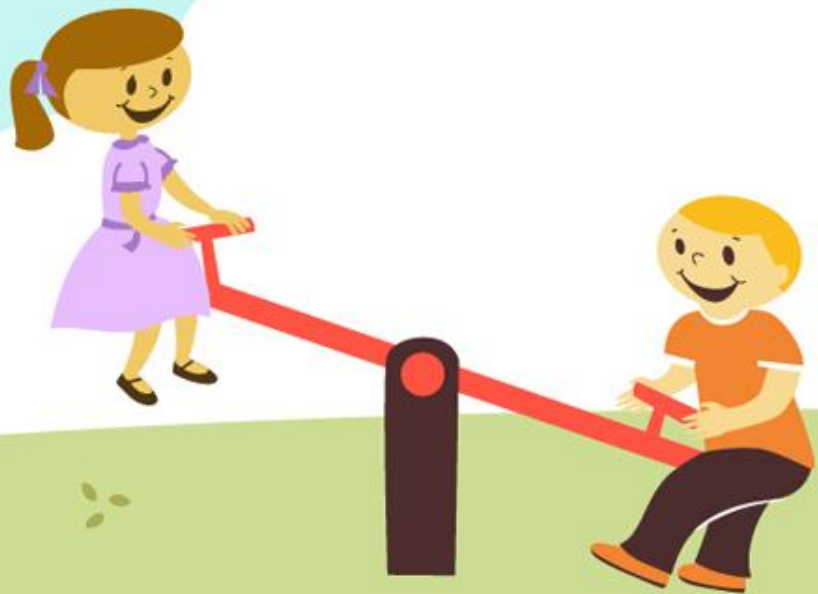
# If a child becomes unwell

- If any child displays symptoms of Coronavirus they will be removed to a sick room behind a closed door. Staff will care for them whilst wearing PPE. Parents will be contacted, the child will be sent home and will be expected to self-isolate for 7 days.
- If a child or member of staff tests positive for Coronavirus **ALL of their “Social Bubble” group** will be sent home and advised to self-isolate for 14 days. They will not be allowed to return to school in that time under any circumstances.



# The end of the day

Different end times



# End of the day

- Children in Reception will leave at 3pm
- Children in Year 1 will leave at 3.15pm
- Children in Year 6 will leave at 3.30pm
  
- Please wait for your child on the main playground and do not come down the steps

Class	Group 1	Group 2
Reception	15:00	15:00
Year 1	15:15	15:15
Year 6	15:30	15:30





# Collecting your child

- Children will be brought to the top of the steps and the slope and will be asked to go to their parents from there
- Please leave the site immediately after collecting your child
- Under no circumstances should families remain on the playground, and children will not be allowed to play after school on play equipment or the field. Please do be mindful that we will have to monitor this for the safety of everyone.



# Additional points

## Marking work

- Teachers must not take school books home in order to reduce contamination. Therefore, our standard of marking may not be up to our usual expectations. We will balance this with greater levels of pupil:adult interaction during lessons

## Breaktimes

- Children will take breaktimes in their social bubble. In order to ensure all groups are able to access the outdoor space we may reduce breaktimes and children will not have the usual length of time. We will make sure that they have regular opportunities for fresh air and exercise.



# FAQs

Has the school been thoroughly cleaned?

- During closure, all rooms have been disinfected with a special sanitising spray.
- Additional cleaning has taken place on all surfaces to eliminate contamination. When we return we have commissioned more regular and thorough cleaning, including during the school day.

Will I be penalised for keeping my child at home?

- No. We recognise that this is a difficult decision to take. Children not present will be marked as absent but no fines or disciplinary action will be taken. They will continue to access distance learning activities that we can make available.



Will you still set distance learning materials?

- Children who are attending school will not get additional distance learning materials. They will be set our usual pattern of home learning. We will try to continue to provide learning materials for children not in school, although teachers will be occupied in lessons and will not be able to respond to children in the way that they have been.

Can I change my mind about sending my child to school?

- Of course. We know that this is a difficult decision and will continue to work with you to do what is right for your child.



My child has SEND. Will they receive their normal support?

- We will do everything possible to fulfil our legal obligation to support all children, including those with SEND. Teachers will differentiate work and provide support, but we will not be able to run our normal interventions or work with external services. All support will take place within a social bubble.

Will my child be in their usual classroom with their teacher?

- Some children will be in their usual room. However, this cannot work for everyone. Some children will have to be in a different room with a different teacher, although we will try hard to make sure that this is someone they know.

Will my child be expected to avoid all physical contact with others?

- The government has admitted that social distancing will not work with young children, and this is why the social bubble model has been introduced. We will minimise transmission by keeping groups apart but accept that within groups there will be contact. The risk is deemed to be low. Adults will naturally interact with children, although they will do this at their own discretion. Adults will be expected to maintain social distance from other adults. Foremost is our duty of care, and if a child needs comforting we will do this. The only exception would be if a child displays symptoms of illness, when they would be cared for by the office staff and PPE would be worn.



How will you keep us updated about what is happening in school?

- We receive daily updates and guidance from DFE and have a MAT 'Cobra' group that issues guidance to schools. Any changes that we make in response to this guidance will be communicated with you in the usual way (by letter, email and text). If there are substantial changes to the provision we will notify you as soon as we are able.

